

On averaging for switched linear differential algebraic equations

Stephan Trenn

C. Pedicini, F. Vasca, L. Iannelli (Università del Sannio, Benevento)

Technomathematics group, University of Kaiserslautern, Germany

12th European Control Conference (ECC'13)

Thursday, 18.07.2013, ThB5.3, 14:20



Contents



- 1 What is "Averaging"?
- 2 Switched DAEs
- 3 Averaging result for switched DAEs
- 4 Summary

Averaging: Basic idea



switched
system



fast switching

non-switched
average system

Application

- Fast switches occurs at
 - Pulse width modulation
 - „Sliding mode“-control
 - In general: fast digital controller
- Simplified analyses
 - Stability for sufficiently fast switching
 - In general: desired (approximate) behavior via suitable switching

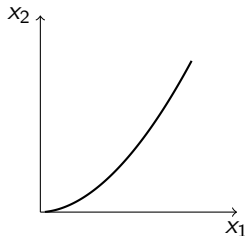
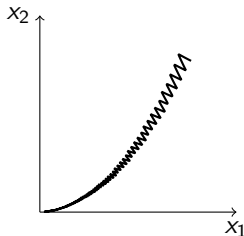
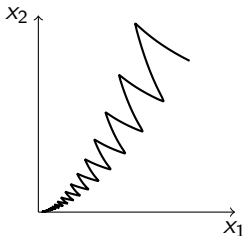
Simple example



Example

$$\dot{x} = A_{\sigma}x, \quad A_1 = \begin{bmatrix} -2 & 0 \\ 0 & 1 \end{bmatrix}, \quad A_2 = \begin{bmatrix} 1 & 0 \\ 0 & -2 \end{bmatrix}, \quad \sigma : \mathbb{R} \rightarrow \{1, 2\} \text{ periodic}$$

switching frequency

 ∞ 

Fixed duty cycle for varying switching frequency (here 45 : 5555 : 45)

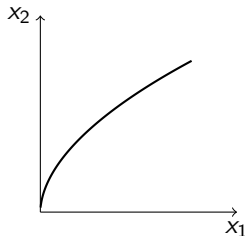
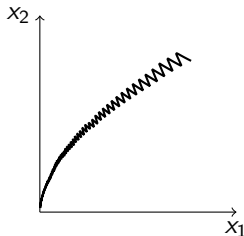
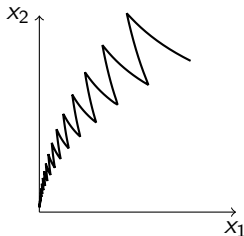
Simple example



Example

$$\dot{x} = A_\sigma x, \quad A_1 = \begin{bmatrix} -2 & 0 \\ 0 & 1 \end{bmatrix}, \quad A_2 = \begin{bmatrix} 1 & 0 \\ 0 & -2 \end{bmatrix}, \quad \sigma : \mathbb{R} \rightarrow \{1, 2\} \text{ periodic}$$

switching frequency

 ∞ 

Fixed duty cycle for varying switching frequency (here 45 : 5555 : 45)

Averaging result for switched linear ODEs



Switched linear ODE

$$\dot{x}(t) = A_{\sigma(t)}x(t), \quad x(0) = x_0$$

where $\sigma : \mathbb{R} \rightarrow \{1, 2\}$ is periodic with **periode** $p > 0$ and **duty cycle** $d > 0$

Theorem (BROCKETT & WOOD 1974)

Let the **average system** be given by

$$\dot{x}_{\text{av}} = A_{\text{av}}x_{\text{av}}, \quad x_{\text{av}}(0) = x_0$$

and

$$A_{\text{av}} := dA_1 + (1 - d)A_2.$$

Then on every compact time interval:

$$\|x(t) - x_{\text{av}}(t)\| = O(p).$$

Switched DAEs



Modeling of electrical circuits with switches yields

Switched differential-algebraic equations (DAEs)

$$E_{\sigma(t)} \dot{x}(t) = A_{\sigma(t)} x(t) \quad (\text{swDAE})$$

Question

Does a similar result also hold for switched DAEs?

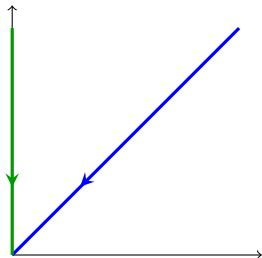
A counterexample



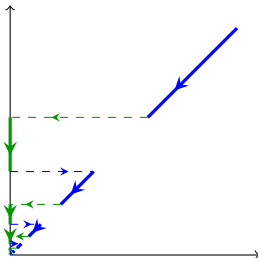
Consider $E_\sigma \dot{x} = A_\sigma x$ with

$$(E_1, A_1) = \left(\begin{bmatrix} 0 & 0 \\ 0 & 1 \end{bmatrix}, \begin{bmatrix} 1 & -1 \\ 0 & -1 \end{bmatrix} \right), \quad (E_2, A_2) = \left(\begin{bmatrix} 0 & 0 \\ 0 & 1 \end{bmatrix}, \begin{bmatrix} 1 & 0 \\ 0 & -1 \end{bmatrix} \right)$$

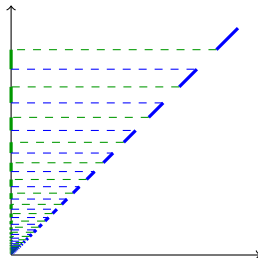
no switching



slow switching



fast switching



System class



$$E_{\sigma(t)}\dot{x}(t) = A_{\sigma(t)}x(t) \quad (\text{swDAE})$$

Assumptions

- $\sigma : [0, \infty) \rightarrow \{1, 2\}$ **periodic** with periode $p > 0$
- $d \in (0, 1)$ is duty cycle for mode 1
- matrix pairs (E_k, A_k) , $k \in \{1, 2\}$, **regular**, i.e. $\det(sE_k - A_k) \neq 0$

Theorem (Quasi-Weierstrass-form, WEIERSTRASS 1868)

(E, A) **regular** $\Leftrightarrow \exists T, S$ invertible:

$$(SET, SAT) = \left(\begin{bmatrix} I & 0 \\ 0 & N \end{bmatrix}, \begin{bmatrix} J & 0 \\ 0 & I \end{bmatrix} \right), \quad N \text{ nilpotent}$$

Note: S and T can easily be calculated via the **Wong sequences**

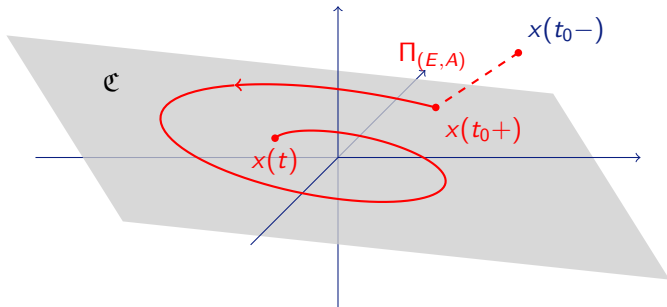
Non-switched DAEs: Properties



$$(SET, SAT) = \left(\begin{bmatrix} I & 0 \\ 0 & N \end{bmatrix}, \begin{bmatrix} J & 0 \\ 0 & I \end{bmatrix} \right), \quad N \text{ nilpotent}$$

Definition (Consistency projector)

$$\Pi_{(E,A)} := T \begin{bmatrix} I & 0 \\ 0 & 0 \end{bmatrix} T^{-1}$$



Solution characterization of DAEs



$$(SET, SAT) = \left(\begin{bmatrix} I & 0 \\ 0 & N \end{bmatrix}, \begin{bmatrix} J & 0 \\ 0 & I \end{bmatrix} \right), \quad N \text{ nilpotent}$$

Definition (Flow matrix A^{diff})

$$A^{\text{diff}} := T \begin{bmatrix} J & 0 \\ 0 & 0 \end{bmatrix} T^{-1}$$

Theorem (Solution characterization, TANWANI & T. 2010)

Consider DAE $E\dot{x} = Ax$ with regular matrix pair (E, A) and corresponding consistency projector $\Pi_{(E,A)}$ and A^{diff}

\Rightarrow

$$x(t) = e^{A^{\text{diff}}(t-t_0)} \Pi_{(E,A)} x(t_0-) \in \mathfrak{C} \quad t \in (t_0, \infty).$$

Remark: At t_0 the presence of **Dirac-impulses** is possible!

Solution behavior for switched DAEs



$$E_{\sigma(t)}\dot{x}(t) = A_{\sigma(t)}x(t) \quad (\text{swDAE})$$

with consistency projectors Π_k and flow matrices A_k^{diff}

Theorem (Impulse freeness, T. 2009)

All solutions of (swDAE) are impulse free, if

$$E_1(I - \Pi_1)\Pi_2 = 0 = E_2(I - \Pi_2)\Pi_1, \quad (\text{IFC})$$

Corollary

All solutions of (swDAE) satisfying (IFC) are given by

$$\begin{aligned} x(t) &= e^{A_{p_{2i}}^{\text{diff}}(t-t_{2i})} \Pi_{p_{2i}} \dots e^{A_2^{\text{diff}}(t_3-t_2)} \Pi_2 e^{A_1^{\text{diff}}(t_2-t_1)} \Pi_1 x(t_1-) \\ &= M(t-t_i) \left(e^{A_2^{\text{diff}}(1-d)} \Pi_2 e^{A_1^{\text{diff}}d} \Pi_1 \right)^i x(t_1-) \end{aligned}$$

Contents



- 1 What is "Averaging"?
- 2 Switched DAEs
- 3 Averaging result for switched DAEs**
- 4 Summary

Condition on consistency projectors



Assumption: commutative projectors

$$\Pi_1 \Pi_2 = \Pi_2 \Pi_1 \quad (\text{C})$$

Lemma

$$(\text{C}) \Rightarrow \text{im } \Pi_1 \Pi_2 = \text{im } \Pi_1 \cap \text{im } \Pi_2$$

Remark: $\text{im } \Pi_1 \cap \text{im } \Pi_2 = \mathcal{C}_1 \cap \mathcal{C}_2$ and obviously the average system, if it exists, can only have solutions within the intersection of the consistency spaces, hence the projector

$$\Pi_{\cap} := \Pi_1 \Pi_2$$

plays a crucial role!

In the example it was: $\Pi_1 \Pi_2 = \Pi_1 \neq \Pi_2 = \Pi_2 \Pi_1$

Main result



$$E_{\sigma(t)}\dot{x}(t) = A_{\sigma(t)}x(t) \quad (\text{swDAE})$$

$$\Pi_1\Pi_2 = \Pi_2\Pi_1 \quad (\text{C})$$

Theorem (Averaging for switched DAEs)

Consider impulse free (swDAE) with consistency projectors Π_1, Π_2 satisfying (C) and flow matrices $A_1^{\text{diff}}, A_2^{\text{diff}}$. The average system is

$$\dot{x}_{\text{av}} = \Pi_{\cap} A_{\text{av}}^{\text{diff}} \Pi_{\cap} x_{\text{av}}, \quad x_{\text{av}}(0) = \Pi_{\cap} x(0-)$$

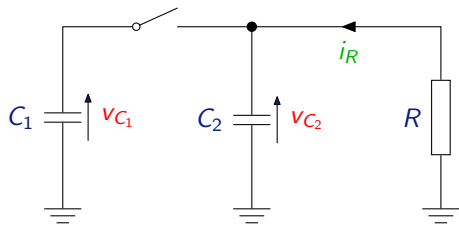
where $\Pi_{\cap} = \Pi_1\Pi_2$ and

$$A_{\text{av}}^{\text{diff}} := dA_1^{\text{diff}} + (1-d)A_2^{\text{diff}}.$$

Then $\forall t \in (0, T]$

$$\|x(t) - x_{\text{av}}(t)\| = O(p)$$

Example



Switch independent: $0 = v_{C_2} - R i_R$

Switch dependent:

open

closed

$$C_1 \dot{v}_{C_1} = 0, \quad C_1 \dot{v}_{C_1} + C_2 \dot{v}_{C_2} = -i_R,$$

$$C_2 \dot{v}_{C_2} = -i_R, \quad 0 = v_{C_1} - v_{C_2},$$

\Rightarrow switched DAE $E_\sigma \dot{x} = A_\sigma x$ with $x = (v_{C_1}, v_{C_2}, i_R)^\top$ given by

$$(E_1, A_1) = \left(\begin{bmatrix} 0 & 0 & 0 \\ C_1 & 0 & 0 \\ 0 & C_2 & 0 \end{bmatrix}, \begin{bmatrix} 0 & -1 & -R \\ 0 & 0 & 0 \\ 0 & 0 & -1 \end{bmatrix} \right)$$

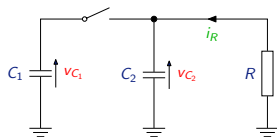
$$(E_2, A_2) = \left(\begin{bmatrix} 0 & 0 & 0 \\ C_1 & C_2 & 0 \\ 0 & 0 & 0 \end{bmatrix}, \begin{bmatrix} 0 & 1 & -R \\ 0 & 0 & 1 \\ 1 & -1 & 0 \end{bmatrix} \right)$$



Example

$$(E_1, A_1) = \left(\begin{bmatrix} 0 & 0 & 0 \\ C_1 & 0 & 0 \\ 0 & C_2 & 0 \end{bmatrix}, \begin{bmatrix} 0 & -1 & -R \\ 0 & 0 & 0 \\ 0 & 0 & -1 \end{bmatrix} \right)$$

$$(E_2, A_2) = \left(\begin{bmatrix} 0 & 0 & 0 \\ C_1 & C_2 & 0 \\ 0 & 0 & 0 \end{bmatrix}, \begin{bmatrix} 0 & 1 & -R \\ 0 & 0 & 1 \\ 1 & -1 & 0 \end{bmatrix} \right)$$



⇒ consistency projectors

$$\Pi_1 = \begin{bmatrix} 1 & 0 & 0 \\ 0 & 1 & 0 \\ 0 & \frac{1}{R} & 0 \end{bmatrix}, \quad \Pi_2 = \frac{1}{C_1 + C_2} \begin{bmatrix} C_1 & C_2 & 0 \\ C_1 & C_2 & 0 \\ \frac{C_1}{R} & \frac{C_2}{R} & 0 \end{bmatrix}.$$

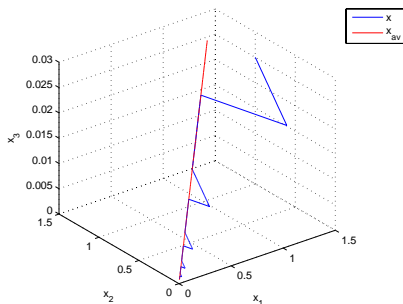
and **(C)** holds:

$$\Pi_1 \Pi_2 = \Pi_2 = \Pi_2 \Pi_1$$

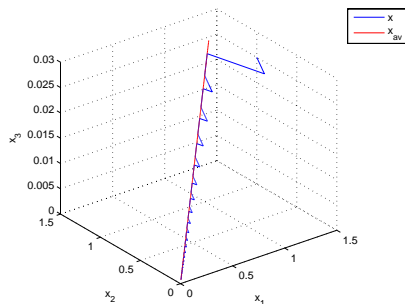
Simulation results



$$d_1 = 0.4, \quad p = 0.1$$



$$d_1 = 0.4, \quad p = 0.02$$





Summary

- Generalization of classical averaging result to switched DAEs
 - average system **does not exist** in all cases
 - Additional **condition for consistency projectors** necessary
 - classical average matrix must be projected to the right space
- Further results and open questions
 - More than two modes (submitted to CDC'13)
 - Commutativity of consistency projectors necessary?
 - Impulses: Convergence in the sense of distributions?